

BAYSHORE

AT CREEK BEACH

FLOOR PLANS BUILDING 2



EMAAR

investindxb.com

DUBAI CREEK
HARBOUR

BAYSHORE AT
CREEK BEACH

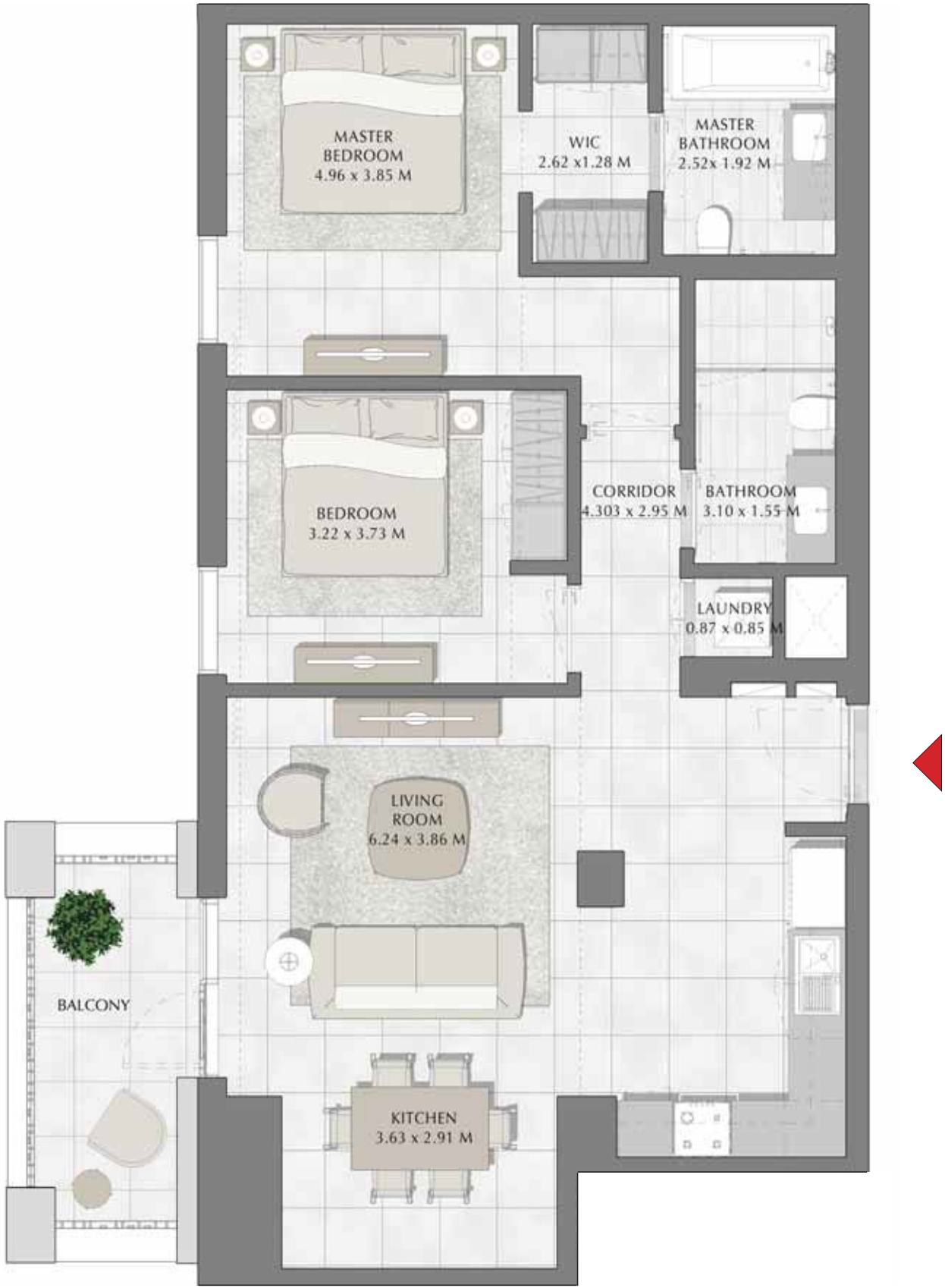
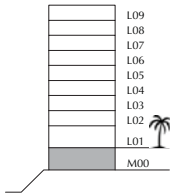
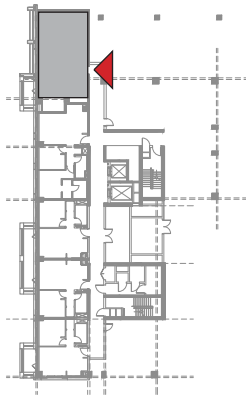
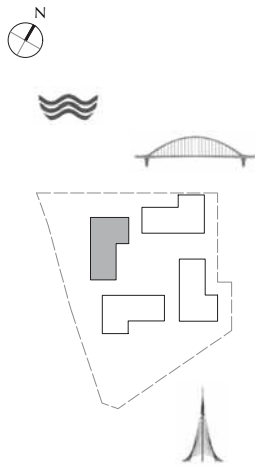
BUILDING 2

MEZZANINE LEVEL

UNIT M01

2 BED ROOM

APARTMENT AREA	92.55 SQ.M.	996.20 SQ.FT.
BALCONY AREA	7.69 SQ.M.	82.77 SQ.FT.
TOTAL AREA	100.24 SQ.M.	1078.97 SQ.FT.



FLOOR PLAN 1. All dimensions are in imperial and metric, and measured from finish to finish excluding construction tolerances. 2.All materials, dimensions, and drawings are approximate only. 3. Information is subject to change without notice, at developer's absolute discretion. 4. Actual area may vary from the stated area. 5. Drawings not to scale. 6. All images used are for illustrative purpose only and do not represent the actual size, features, specifications, fittings, and furnishings. 7. The developer reserves the right to make revisions / alterations, at it's a absolute discretion, without any liability whatsoever.

DUBAI CREEK
HARBOUR

BAYSHORE AT
CREEK BEACH

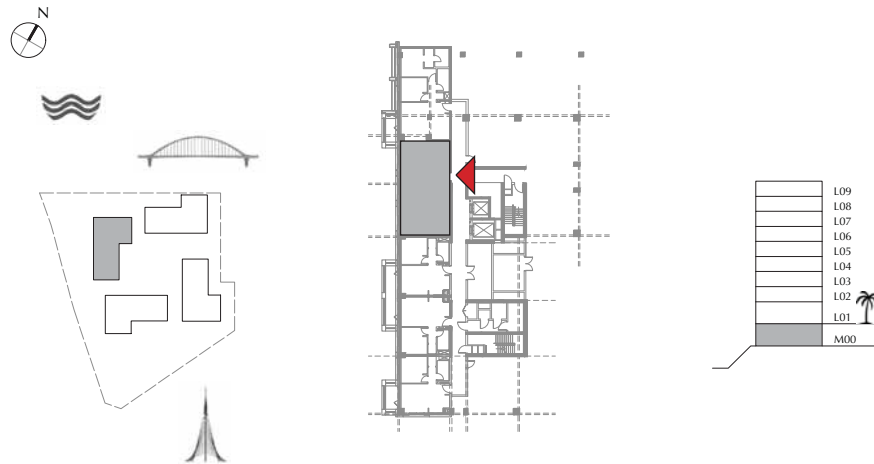
BUILDING 2

MEZZANINE LEVEL

UNIT M02

2 BED ROOM

APARTMENT AREA	85.10 SQ.M.	916.01 SQ.FT.
BALCONY AREA	0.00 SQ.M.	00.00 SQ.FT.
TOTAL AREA	85.10 SQ.M.	916.01 SQ.FT.



FLOOR PLAN 1. All dimensions are in imperial and metric, and measured from finish to finish excluding construction tolerances. 2.All materials, dimensions, and drawings are approximate only. 3. Information is subject to change without notice, at developer's absolute discretion. 4. Actual area may vary from the stated area. 5. Drawings not to scale. 6. All images used are for illustrative purpose only and do not represent the actual size, features, specifications, fittings, and furnishings. 7. The developer reserves the right to make revisions / alterations, at it's a absolute discretion, without any liability whatsoever.

DUBAI CREEK
HARBOUR

BAYSHORE AT
CREEK BEACH

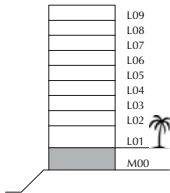
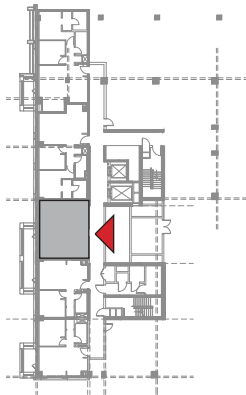
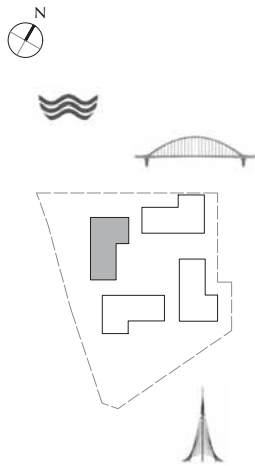
BUILDING 2

MEZZANINE LEVEL

UNIT M03

1 BEDROOM

APARTMENT AREA	54.96 SQ.M.	591.58 SQ.FT.
BALCONY AREA	8.40 SQ.M.	90.42 SQ.FT.
TOTAL AREA	63.36 SQ.M.	682.00 SQ.FT.



FLOOR PLAN 1. All dimensions are in imperial and metric, and measured from finish to finish excluding construction tolerances. 2. All materials, dimensions, and drawings are approximate only. 3. Information is subject to change without notice, at developer's absolute discretion. 4. Actual area may vary from the stated area. 5. Drawings not to scale. 6. All images used are for illustrative purpose only and do not represent the actual size, features, specifications, fittings, and furnishings. 7. The developer reserves the right to make revisions / alterations, at it's a absolute discretion, without any liability whatsoever.

DUBAI CREEK
HARBOUR

BAYSHORE AT
CREEK BEACH

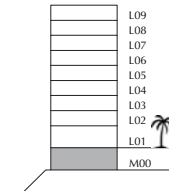
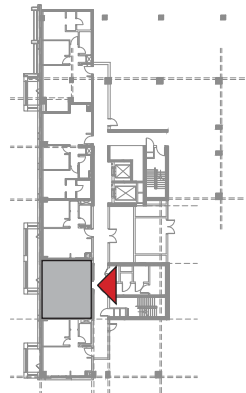
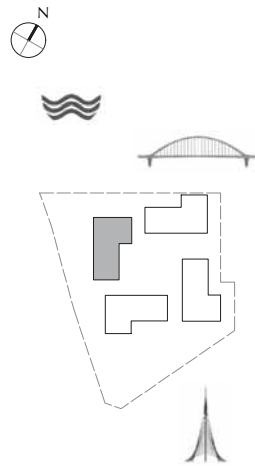
BUILDING 2

MEZZANINE LEVEL

UNIT M04

1 BEDROOM

APARTMENT AREA	55.29 SQ.M.	595.14 SQ.FT.
BALCONY AREA	8.40 SQ.M.	90.42 SQ.FT.
TOTAL AREA	63.69 SQ.M.	685.56 SQ.FT.



FLOOR PLAN 1. All dimensions are in imperial and metric, and measured from finish to finish excluding construction tolerances. 2. All materials, dimensions, and drawings are approximate only. 3. Information is subject to change without notice, at developer's absolute discretion. 4. Actual area may vary from the stated area. 5. Drawings not to scale. 6. All images used are for illustrative purpose only and do not represent the actual size, features, specifications, fittings, and furnishings. 7. The developer reserves the right to make revisions / alterations, at its absolute discretion, without any liability whatsoever.

DUBAI CREEK
HARBOUR

BAYSHORE AT
CREEK BEACH

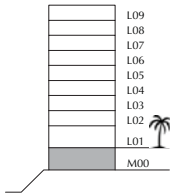
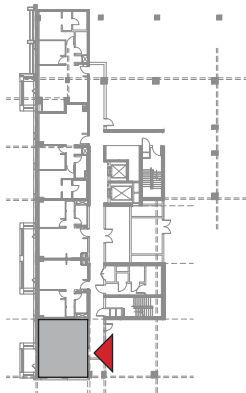
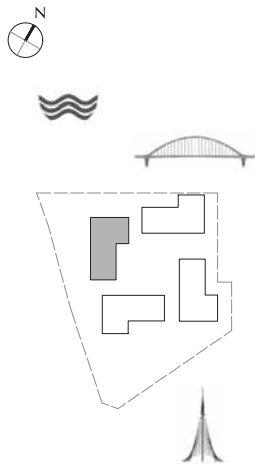
BUILDING 2

MEZZANINE LEVEL

UNIT M05

1 BEDROOM

APARTMENT AREA	54.50 SQ.M.	586.63 SQ.FT.
BALCONY AREA	7.40 SQ.M.	79.65 SQ.FT.
TOTAL AREA	61.90 SQ.M.	666.28 SQ.FT.



FLOOR PLAN 1. All dimensions are in imperial and metric, and measured from finish to finish excluding construction tolerances. 2. All materials, dimensions, and drawings are approximate only. 3. Information is subject to change without notice, at developer's absolute discretion. 4. Actual area may vary from the stated area. 5. Drawings not to scale. 6. All images used are for illustrative purpose only and do not represent the actual size, features, specifications, fittings, and furnishings. 7. The developer reserves the right to make revisions / alterations, at it's a absolute discretion, without any liability whatsoever.

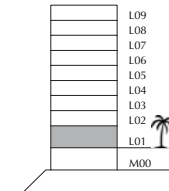
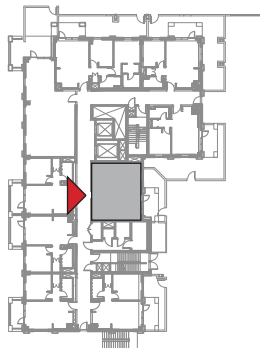
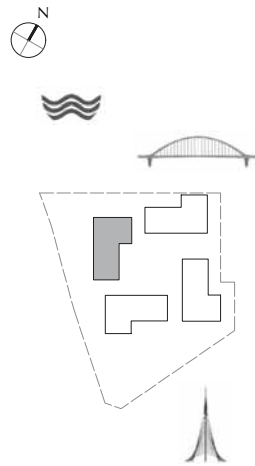
DUBAI CREEK
HARBOUR

BAYSHORE AT
CREEK BEACH

BUILDING 2
LEVEL 1
UNIT 101

1 BEDROOM

APARTMENT AREA	55.35 SQ.M.	595.78 SQ.FT.
BALCONY AREA	22.32 SQ.M.	240.25 SQ.FT.
TOTAL AREA	77.67 SQ.M.	836.03 SQ.FT.



FLOOR PLAN 1. All dimensions are in imperial and metric, and measured from finish to finish excluding construction tolerances. 2. All materials, dimensions, and drawings are approximate only. 3. Information is subject to change without notice, at developer's absolute discretion. 4. Actual area may vary from the stated area. 5. Drawings not to scale. 6. All images used are for illustrative purpose only and do not represent the actual size, features, specifications, fittings, and furnishings. 7. The developer reserves the right to make revisions / alterations, at its absolute discretion, without any liability whatsoever.

DUBAI CREEK
HARBOUR

BAYSHORE AT
CREEK BEACH

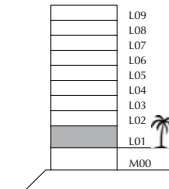
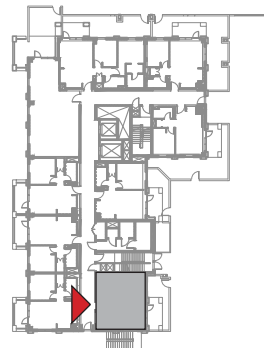
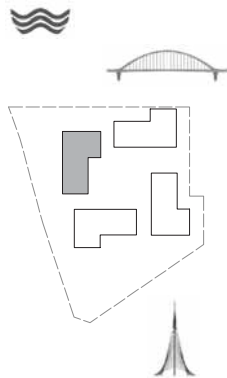
BUILDING 2

LEVEL 1

UNIT 102

1 BED ROOM

APARTMENT AREA	54.80 SQ.M.	589.86 SQ.FT.
BALCONY AREA	24.86 SQ.M.	267.59 SQ.FT.
TOTAL AREA	79.66 SQ.M.	857.45 SQ.FT.



FLOOR PLAN 1. All dimensions are in imperial and metric, and measured from finish to finish excluding construction tolerances. 2. All materials, dimensions, and drawings are approximate only. 3. Information is subject to change without notice, at developer's absolute discretion. 4. Actual area may vary from the stated area. 5. Drawings not to scale. 6. All images used are for illustrative purpose only and do not represent the actual size, features, specifications, fittings, and furnishings. 7. The developer reserves the right to make revisions / alterations, at its absolute discretion, without any liability whatsoever.

DUBAI CREEK
HARBOUR

BAYSHORE AT
CREEK BEACH

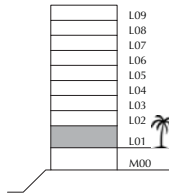
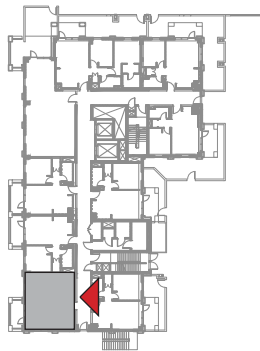
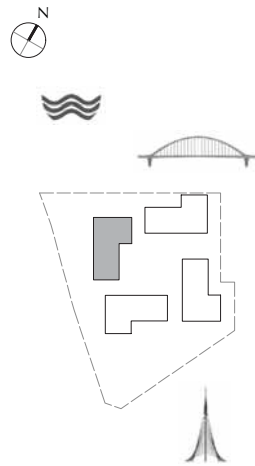
BUILDING 2

LEVEL 1

UNIT 103

1 BEDROOM

APARTMENT AREA	54.60 SQ.M.	587.71 SQ.FT.
BALCONY AREA	7.40 SQ.M.	79.65 SQ.FT.
TOTAL AREA	62.00 SQ.M.	667.36 SQ.FT.



FLOOR PLAN 1. All dimensions are in imperial and metric, and measured from finish to finish excluding construction tolerances. 2. All materials, dimensions, and drawings are approximate only. 3. Information is subject to change without notice, at developer's absolute discretion. 4. Actual area may vary from the stated area. 5. Drawings not to scale. 6. All images used are for illustrative purpose only and do not represent the actual size, features, specifications, fittings, and furnishings. 7. The developer reserves the right to make revisions / alterations, at it's a absolute discretion, without any liability whatsoever.

DUBAI CREEK
HARBOUR

BAYSHORE AT
CREEK BEACH

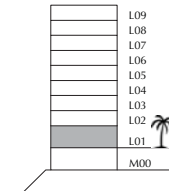
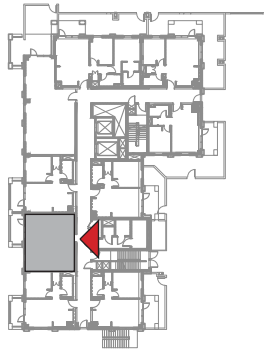
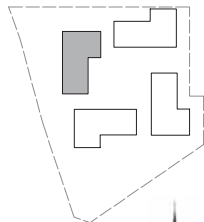
BUILDING 2

LEVEL 1

UNIT 104

1 BEDROOM

APARTMENT AREA	55.10 SQ.M.	593.09 SQ.FT.
BALCONY AREA	8.40 SQ.M.	90.42 SQ.FT.
TOTAL AREA	63.50 SQ.M.	683.51 SQ.FT.



FLOOR PLAN 1. All dimensions are in imperial and metric, and measured from finish to finish excluding construction tolerances. 2.All materials, dimensions, and drawings are approximate only. 3. Information is subject to change without notice, at developer's absolute discretion. 4. Actual area may vary from the stated area. 5. Drawings not to scale. 6. All images used are for illustrative purpose only and do not represent the actual size, features, specifications, fittings, and furnishings. 7. The developer reserves the right to make revisions / alterations, at it's a absolute discretion, without any liability whatsoever.

DUBAI CREEK
HARBOUR

BAYSHORE AT
CREEK BEACH

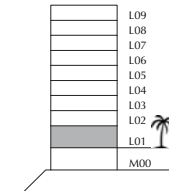
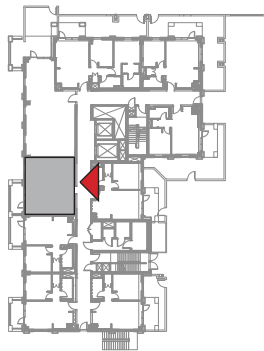
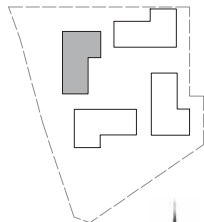
BUILDING 2

LEVEL 1

UNIT 105

1 BED ROOM

APARTMENT AREA	54.95 SQ.M.	591.48 SQ.FT.
BALCONY AREA	8.40 SQ.M.	90.42 SQ.FT.
TOTAL AREA	63.35 SQ.M.	681.90 SQ.FT.



FLOOR PLAN 1. All dimensions are in imperial and metric, and measured from finish to finish excluding construction tolerances. 2. All materials, dimensions, and drawings are approximate only. 3. Information is subject to change without notice, at developer's absolute discretion. 4. Actual area may vary from the stated area. 5. Drawings not to scale. 6. All images used are for illustrative purpose only and do not represent the actual size, features, specifications, fittings, and furnishings. 7. The developer reserves the right to make revisions / alterations, at its absolute discretion, without any liability whatsoever.

DUBAI CREEK
HARBOUR

BAYSHORE AT
CREEK BEACH

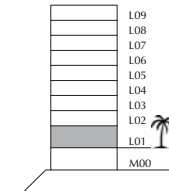
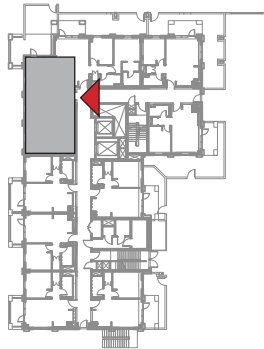
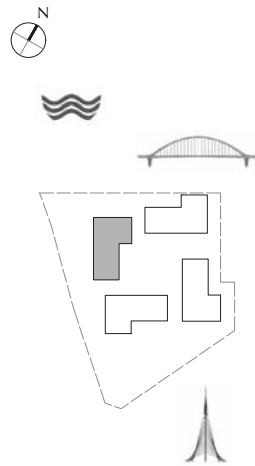
BUILDING 2

LEVEL 1

UNIT 106

2 BED ROOM

APARTMENT AREA	82.73 SQ.M.	890.50 SQ.FT.
BALCONY AREA	39.06 SQ.M.	420.44 SQ.FT.
TOTAL AREA	121.79 SQ.M.	1310.94 SQ.FT.



FLOOR PLAN 1. All dimensions are in imperial and metric, and measured from finish to finish excluding construction tolerances. 2. All materials, dimensions, and drawings are approximate only. 3. Information is subject to change without notice, at developer's absolute discretion. 4. Actual area may vary from the stated area. 5. Drawings not to scale. 6. All images used are for illustrative purpose only and do not represent the actual size, features, specifications, fittings, and furnishings. 7. The developer reserves the right to make revisions / alterations, at its absolute discretion, without any liability whatsoever.

DUBAI CREEK
HARBOUR

BAYSHORE AT
CREEK BEACH

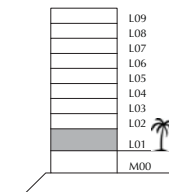
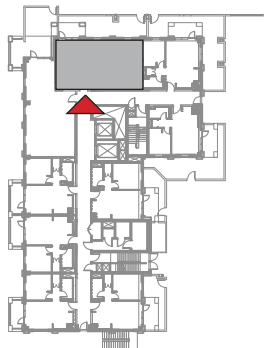
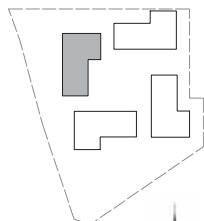
BUILDING 2

LEVEL 1

UNIT 107

2 BED ROOM

APARTMENT AREA	83.50 SQ.M.	898.79 SQ.FT.
BALCONY AREA	39.70 SQ.M.	427.33 SQ.FT.
TOTAL AREA	123.20 SQ.M.	1326.12 SQ.FT.



FLOOR PLAN 1. All dimensions are in imperial and metric, and measured from finish to finish excluding construction tolerances. 2. All materials, dimensions, and drawings are approximate only. 3. Information is subject to change without notice, at developer's absolute discretion. 4. Actual area may vary from the stated area. 5. Drawings not to scale. 6. All images used are for illustrative purpose only and do not represent the actual size, features, specifications, fittings, and furnishings. 7. The developer reserves the right to make revisions / alterations, at its absolute discretion, without any liability whatsoever.

DUBAI CREEK
HARBOUR

BAYSHORE AT
CREEK BEACH

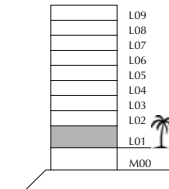
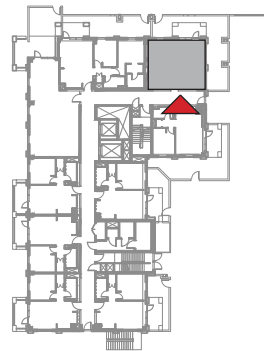
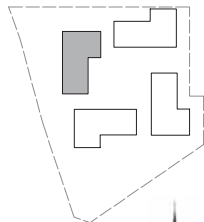
BUILDING 2

LEVEL 1

UNIT 108

1 BED ROOM

APARTMENT AREA	55.82 SQ.M.	600.84 SQ.FT.
BALCONY AREA	57.50 SQ.M.	618.92 SQ.FT.
TOTAL AREA	113.32 SQ.M.	1219.76 SQ.FT.



FLOOR PLAN 1. All dimensions are in imperial and metric, and measured from finish to finish excluding construction tolerances. 2. All materials, dimensions, and drawings are approximate only. 3. Information is subject to change without notice, at developer's absolute discretion. 4. Actual area may vary from the stated area. 5. Drawings not to scale. 6. All images used are for illustrative purpose only and do not represent the actual size, features, specifications, fittings, and furnishings. 7. The developer reserves the right to make revisions / alterations, at its absolute discretion, without any liability whatsoever.

EMAAR

DUBAI CREEK
HARBOUR

BAYSHORE AT
CREEK BEACH

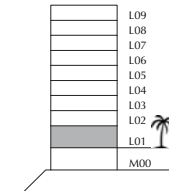
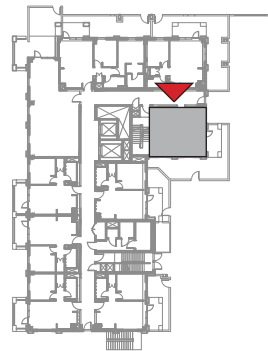
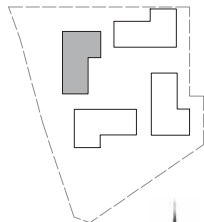
BUILDING 2

LEVEL 1

UNIT 109

1 BEDROOM

APARTMENT AREA	49.82 SQ.M.	536.26 SQ.FT.
BALCONY AREA	47.12 SQ.M.	507.20 SQ.FT.
TOTAL AREA	96.94 SQ.M.	1043.46 SQ.FT.



FLOOR PLAN 1. All dimensions are in imperial and metric, and measured from finish to finish excluding construction tolerances. 2. All materials, dimensions, and drawings are approximate only. 3. Information is subject to change without notice, at developer's absolute discretion. 4. Actual area may vary from the stated area. 5. Drawings not to scale. 6. All images used are for illustrative purpose only and do not represent the actual size, features, specifications, fittings, and furnishings. 7. The developer reserves the right to make revisions / alterations, at it's a absolute discretion, without any liability whatsoever.

EMAAR

DUBAI CREEK
HARBOUR

BAYSHORE AT
CREEK BEACH

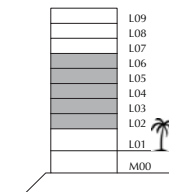
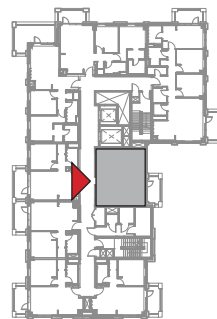
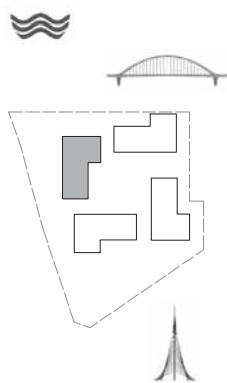
BUILDING 2

LEVEL 2, 3, 4, 5, 6

UNIT 201, 301, 401, 501, 601

1 BEDROOM

APARTMENT AREA	55.35 SQ.M.	595.78 SQ.FT.
BALCONY AREA	7.60 SQ.M.	81.81 SQ.FT.
TOTAL AREA	62.95 SQ.M.	677.59 SQ.FT.



FLOOR PLAN 1. All dimensions are in imperial and metric, and measured from finish to finish excluding construction tolerances. 2. All materials, dimensions, and drawings are approximate only. 3. Information is subject to change without notice, at developer's absolute discretion. 4. Actual area may vary from the stated area. 5. Drawings not to scale. 6. All images used are for illustrative purpose only and do not represent the actual size, features, specifications, fittings, and furnishings. 7. The developer reserves the right to make revisions / alterations, at it's a absolute discretion, without any liability whatsoever.

EMAAR

DUBAI CREEK
HARBOUR

BAYSHORE AT
CREEK BEACH

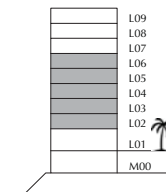
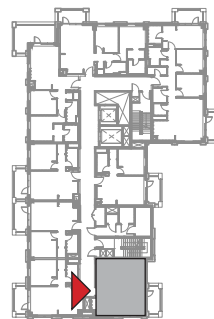
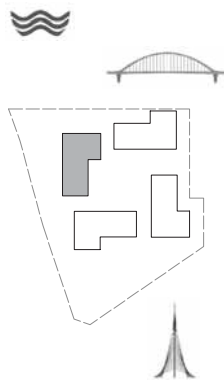
BUILDING 2

LEVEL 2, 3, 4, 5, 6

UNIT 202, 302, 402, 502, 602

1 BEDROOM

APARTMENT AREA	56.89 SQ.M.	612.36 SQ.FT.
BALCONY AREA	7.40 SQ.M.	79.65 SQ.FT.
TOTAL AREA	64.29 SQ.M.	692.01 SQ.FT.



FLOOR PLAN 1. All dimensions are in imperial and metric, and measured from finish to finish excluding construction tolerances. 2.All materials, dimensions, and drawings are approximate only. 3. Information is subject to change without notice, at developer's absolute discretion. 4. Actual area may vary from the stated area. 5. Drawings not to scale. 6. All images used are for illustrative purpose only and do not represent the actual size, features, specifications, fittings, and furnishings. 7. The developer reserves the right to make revisions / alterations, at it's a absolute discretion, without any liability whatsoever.

DUBAI CREEK
HARBOUR

BAYSHORE AT
CREEK BEACH

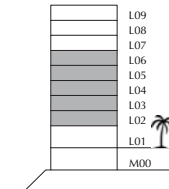
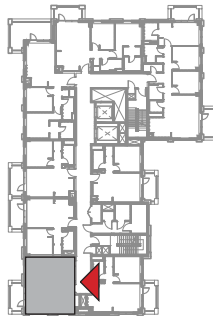
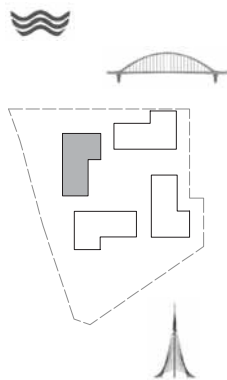
BUILDING 2

LEVEL 2, 3, 4, 5, 6

UNIT 203, 303, 403, 503, 603

1 BEDROOM

APARTMENT AREA	56.67 SQ.M.	609.99 SQ.FT.
BALCONY AREA	7.40 SQ.M.	79.65 SQ.FT.
TOTAL AREA	64.07 SQ.M.	689.64 SQ.FT.



FLOOR PLAN 1. All dimensions are in imperial and metric, and measured from finish to finish excluding construction tolerances. 2. All materials, dimensions, and drawings are approximate only. 3. Information is subject to change without notice, at developer's absolute discretion. 4. Actual area may vary from the stated area. 5. Drawings not to scale. 6. All images used are for illustrative purpose only and do not represent the actual size, features, specifications, fittings, and furnishings. 7. The developer reserves the right to make revisions / alterations, at it's a absolute discretion, without any liability whatsoever.

DUBAI CREEK
HARBOUR

BAYSHORE AT
CREEK BEACH

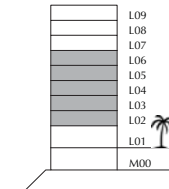
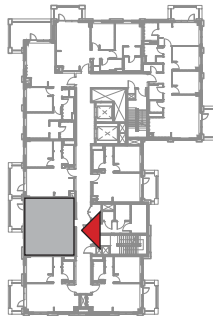
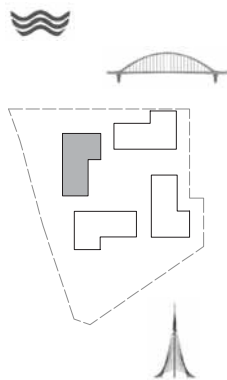
BUILDING 2

LEVEL 2, 3, 4, 5, 6

UNIT 204, 304, 404, 504, 604

1 BEDROOM

APARTMENT AREA	55.10 SQ.M.	593.09 SQ.FT.
BALCONY AREA	8.40 SQ.M.	90.42 SQ.FT.
TOTAL AREA	63.50 SQ.M.	683.51 SQ.FT.



FLOOR PLAN 1. All dimensions are in imperial and metric, and measured from finish to finish excluding construction tolerances. 2. All materials, dimensions, and drawings are approximate only. 3. Information is subject to change without notice, at developer's absolute discretion. 4. Actual area may vary from the stated area. 5. Drawings not to scale. 6. All images used are for illustrative purpose only and do not represent the actual size, features, specifications, fittings, and furnishings. 7. The developer reserves the right to make revisions / alterations, at it's a absolute discretion, without any liability whatsoever.

EMAAR

DUBAI CREEK
HARBOUR

BAYSHORE AT
CREEK BEACH

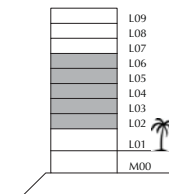
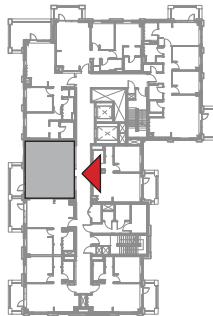
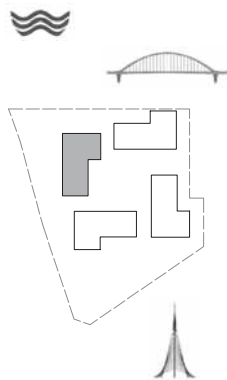
BUILDING 2

LEVEL 2, 3, 4, 5, 6

UNIT 205, 305, 405, 505, 605

1 BED ROOM

APARTMENT AREA	54.95 SQ.M.	591.48 SQ.FT.
BALCONY AREA	8.40 SQ.M.	90.42 SQ.FT.
TOTAL AREA	63.35 SQ.M.	681.90 SQ.FT.



FLOOR PLAN 1. All dimensions are in imperial and metric, and measured from finish to finish excluding construction tolerances. 2. All materials, dimensions, and drawings are approximate only. 3. Information is subject to change without notice, at developer's absolute discretion. 4. Actual area may vary from the stated area. 5. Drawings not to scale. 6. All images used are for illustrative purpose only and do not represent the actual size, features, specifications, fittings, and furnishings. 7. The developer reserves the right to make revisions / alterations, at it's a absolute discretion, without any liability whatsoever.

DUBAI CREEK
HARBOUR

BAYSHORE AT
CREEK BEACH

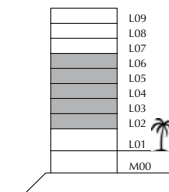
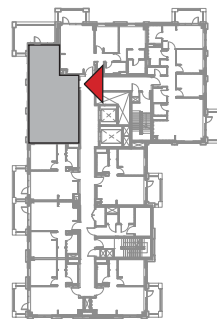
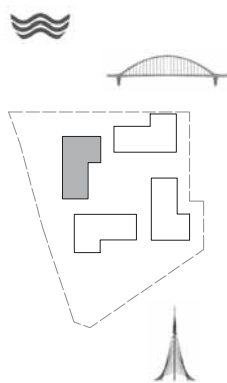
BUILDING 2

LEVEL 2, 3, 4, 5, 6

UNIT 206, 306, 406, 506, 606

2 BED ROOM

APARTMENT AREA	82.73 SQ.M.	890.50 SQ.FT.
BALCONY AREA	18.48 SQ.M.	198.92 SQ.FT.
TOTAL AREA	101.21 SQ.M.	1089.42 SQ.FT.



FLOOR PLAN 1. All dimensions are in imperial and metric, and measured from finish to finish excluding construction tolerances. 2. All materials, dimensions, and drawings are approximate only. 3. Information is subject to change without notice, at developer's absolute discretion. 4. Actual area may vary from the stated area. 5. Drawings not to scale. 6. All images used are for illustrative purpose only and do not represent the actual size, features, specifications, fittings, and furnishings. 7. The developer reserves the right to make revisions / alterations, at it's a absolute discretion, without any liability whatsoever.

DUBAI CREEK
HARBOUR

BAYSHORE AT
CREEK BEACH

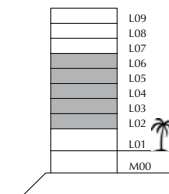
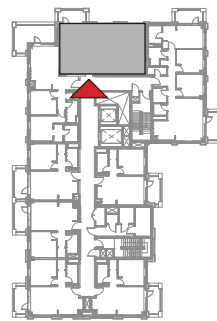
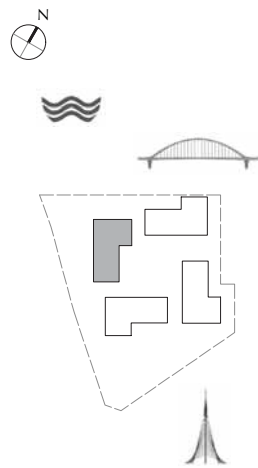
BUILDING 2

LEVEL 2, 3, 4, 5, 6

UNIT 207, 307, 407, 507, 607

2 BED ROOM

APARTMENT AREA	83.50 SQ.M.	898.79 SQ.FT.
BALCONY AREA	7.40 SQ.M.	79.65 SQ.FT.
TOTAL AREA	90.90 SQ.M.	978.44 SQ.FT.



FLOOR PLAN 1. All dimensions are in imperial and metric, and measured from finish to finish excluding construction tolerances. 2. All materials, dimensions, and drawings are approximate only. 3. Information is subject to change without notice, at developer's absolute discretion. 4. Actual area may vary from the stated area. 5. Drawings not to scale. 6. All images used are for illustrative purpose only and do not represent the actual size, features, specifications, fittings, and furnishings. 7. The developer reserves the right to make revisions / alterations, at its absolute discretion, without any liability whatsoever.

DUBAI CREEK
HARBOUR

BAYSHORE AT
CREEK BEACH

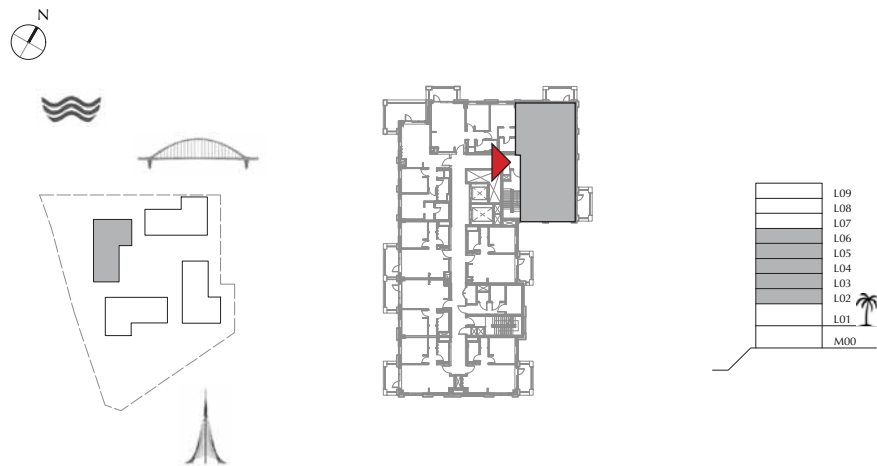
BUILDING 2

LEVEL 2, 3, 4, 5, 6

UNIT 208, 308, 408, 508, 608

3 BED ROOM

APARTMENT AREA	123.57 SQ.M.	1330.10 SQ.FT.
BALCONY AREA	14.79 SQ.M.	159.20 SQ.FT.
TOTAL AREA	138.36 SQ.M.	1489.30 SQ.FT.







FLOOR PLAN 1. All dimensions are in imperial and metric, and measured from finish to finish excluding construction tolerances. 2. All materials, dimensions, and drawings are approximate only. 3. Information is subject to change without notice, at developer's absolute discretion. 4. Actual area may vary from the stated area. 5. Drawings not to scale. 6. All images used are for illustrative purpose only and do not represent the actual size, features, specifications, fittings, and furnishings. 7. The developer reserves the right to make revisions / alterations, at its absolute discretion, without any liability whatsoever.

BAYSHORE





AT CREEK BEACH

FOR MORE INFORMATION PLEASE CONTACT



 +971 55 476 7630
 +971 4 368 7878
 info@afsrealestate.com
 www.afsrealestate.com



 +971 50 674 2020
 +971 4 368 7878
 info@dubricks.com
 www.dubricks.com

EMAAR